

# ArmaDlock Fitting Instruction Sheet

## Citroen Berlingo / Peugeot Partner (2008 > Current) - Side Door

This is a guide for the fitting of an ArmaDlock on the side door of a Citroen Berlingo / Peugeot Partner

**NB:** Make sure the doors open and close correctly before fitting. All holes drilled should be deburred and treated with paint to manufacturers recommendations.



Kit should contain: 6 Cap Bolts, 2 Mushroom Bolts, 4 Shake Proof Nuts, 6 Large Washers, 2 Small Washers, 8 Shake Proof Washers, 6 Gromits, 2 Gaskets, 1 ArmaDlock Lock and 1 Set Of Keys

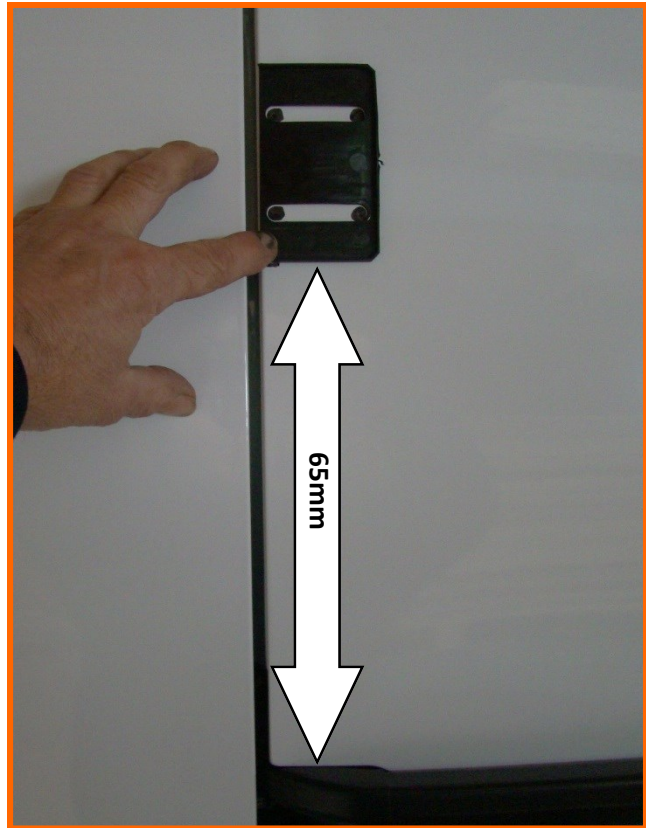


This picture shows the types of bolts and nuts used and their position on the side door ArmaDlock.

# ArmaDlock Fitting Instruction Sheet

## Citroen Berlingo / Peugeot Partner (2008 > Current) - Side Door

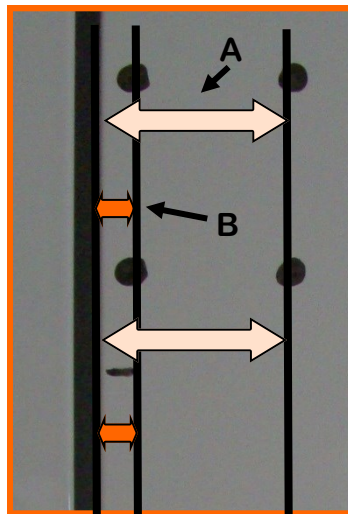
1) On the body panel, place the gasket 65mm up from the door runner (shown by the arrow) and draw two circles at either end of the gasket, these are the drill holes.



The outer holes should be 53mm (Arrow A) away from the edge of the door.

The inner hole (Arrow B) should be 15mm away from the edge of the door.

2) Once checked, drill pilot hole and then the M6 hole.



# ArmaDlock Fitting Instruction Sheet

## Citroen Berlingo / Peugeot Partner (2008 > Current) - Side Door

3) Using a punch, pass through the four external holes on the vehicle body (not the door) to mark the positions on the inside pillars to identify where to drill internal holes



4) Once holes have been marked open them up to 20mm



# **ArmaDlock Fitting Instruction Sheet**

---

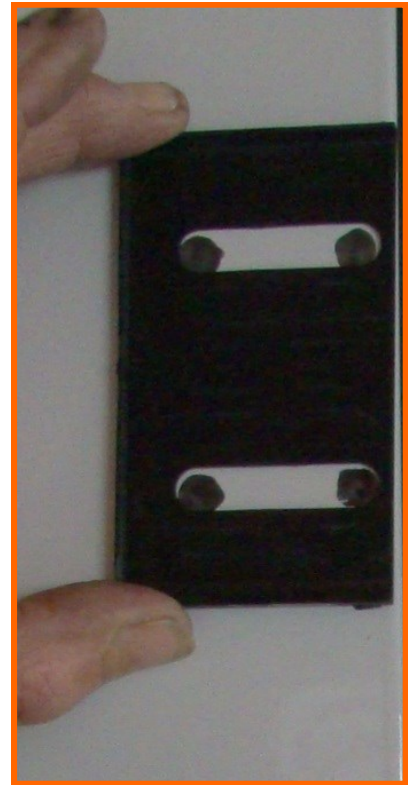
## **Citroen Berlingo / Peugeot Partner (2008 > Current) - Side Door**

- 5) Place washers on socket screws, then pass the socket screw through the top left hole and screw into the ArmaDlock.**
- 6) Place the bottom left socket screw through and tighten, leaving some play in movement.**
- 7) Place a sliding nut (raised side facing inwards) through the ArmaDlock and put a socket screw through it.**
- 8) Repeat this for last bolt. Tighten all bolts, this side of the ArmaDlock is now fitted.**

# ArmaDlock Fitting Instruction Sheet

## Citroen Berlingo / Peugeot Partner (2008 > Current) - Side Door

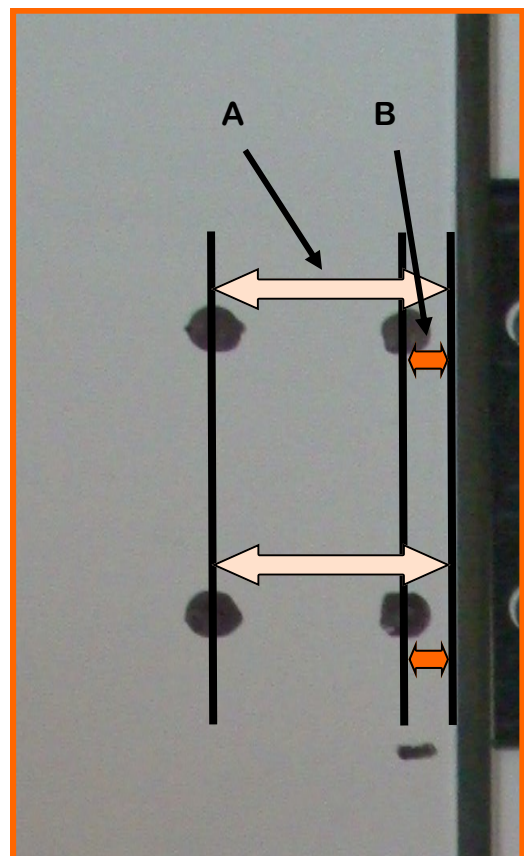
9) Place the left gasket in line with the fitted lock and draw two circles at either end of the gasket, these are the drill holes. The edge of the gasket should be in line with the door edge.



The outer holes (Arrow A) should be 47mm away from the edge of the door.

The inner hole (Arrow B) should be 10mm away from the edge of the door.

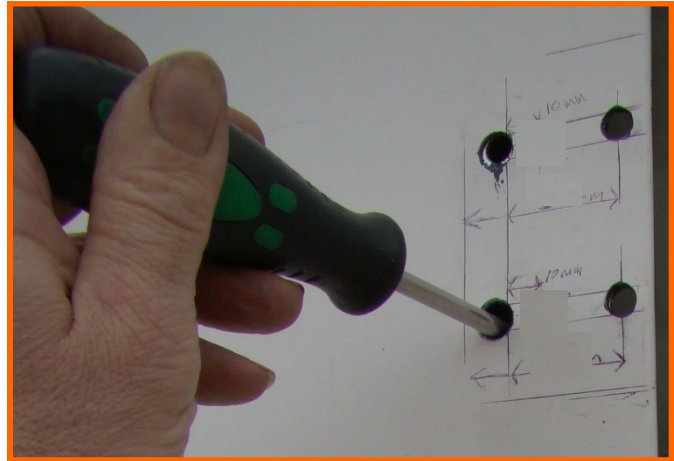
10) Once checked, drill pilot hole and then the M6 hole.



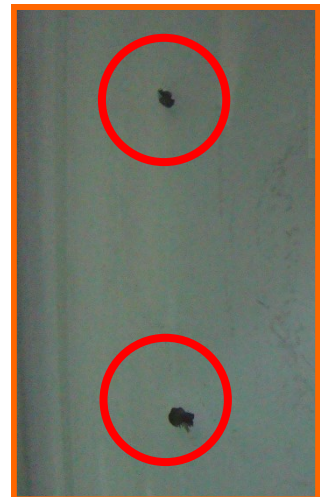
# ArmaDlock Fitting Instruction Sheet

## Citroen Berlingo / Peugeot Partner (2008 > Current) - Side Door

11) Using a punch, pass through the two outer holes on the door to mark the positions on the inside pillar to identify where to drill internal holes.



12) Once holes have been marked open them up to 20mm



# **ArmaDlock Fitting Instruction Sheet**

---

## **Citroen Berlingo / Peugeot Partner (2008 > Current) - Side Door**

**13) Place two sliding nuts (raised side facing inwards) through the ArmaDlock and then put a mushroom headed bolt through the inner hole in the door.**

**14) Place the gasket on the ArmaDlock and offer to receive bolt, repeat on lower bolt.**

**15) Then from inside of the van, pass socket bolt through hole in pillar into machine thread in rear of the ArmaDlock, repeat for second fixing.**